



HARMONT

NEW CAPITAL



PROJECT CONCEPT

Harmont is constructed with a unique design that allows all floors to get natural light exposure without getting affected by the sun's heat. In addition, the smartly designed building offers a magnificent view, overlooking greenery landscapes from every aspect all around the tower and offering marvelous spaces, designed to guarantee comfort and provide all the needed facilities and amenities. The tower is an extraordinary architectural mixed-use building consisting of ground and 12 floors, introducing an immense work experience for administrative and commercial units to be beneficial for both the business owner and the consumer with various range of finished spacious units with exquisite interiors. All administrative units will be delivered fully finished with air conditioners to give a superb working experience for all business owners.

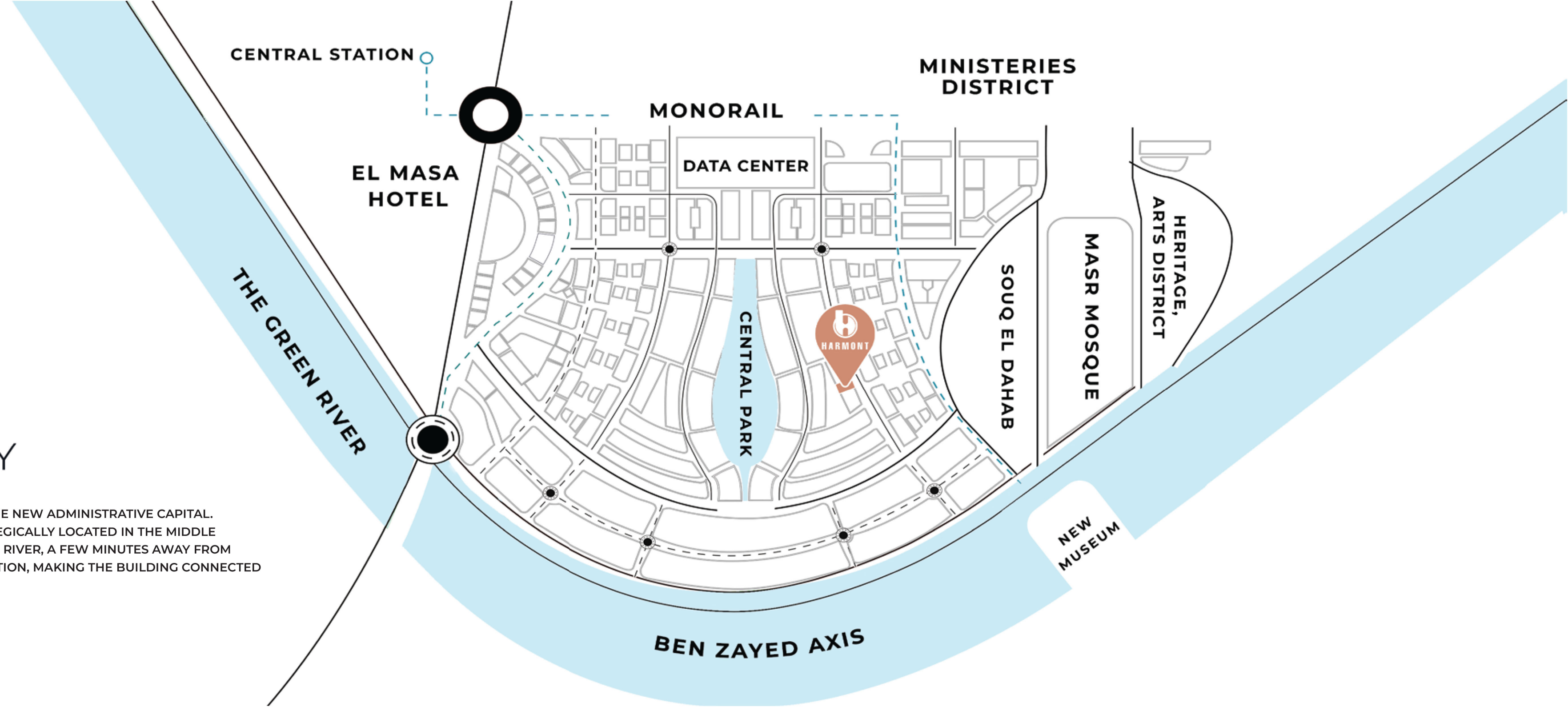
Aside from the marvelous spaces, and the perfect contrast between the green leaves and the fine lines of stages, the ten floors building are full of various services such as banks, ATMs, valet services, and underground parking.

The building introduces a new experience for the spacious retail unit that is going to benefit both the business owner and the consumer. The administrative spaces are designed to guarantee comfort to people and to provide all the needed facilities and amenities.



LOCATION & ACCESSIBILITY

HARMONT IS THE COMPANY'S FIRST PROJECT IN THE NEW ADMINISTRATIVE CAPITAL. IT IS AN EASILY ACCESSIBLE TOWER THAT IS STRATEGICALLY LOCATED IN THE MIDDLE OF THE GOVERNMENTAL DISTRICT AND THE GREEN RIVER, A FEW MINUTES AWAY FROM THE MOSQUE OF EGYPT, NEAR THE MONORAIL STATION, MAKING THE BUILDING CONNECTED TO EVERY PLACE IN THE NEW CAPITAL.





4 LEVELS UNDERGROUND PARKING



SEPARATE ADMIN ENTRANCE



SERVICE CORRIDORS



GREEN AREAS



OUTDOOR SPACES TERRACES



PEDESTRIAN WALKWAY



HANDICAPPED FRIENDLY



ATM ONSITE



TWO PANORAMIC RETAIL ELEVATORS



LANDSCAPE & OUTDOOR AREAS



MEETING ROOM



SOCIAL LOUNGE



TWO OFFICE ELEVATORS



ROOF GARDEN



SOLAR PANELS



PRAYING ROOM



GENERATOR



SECURITY SYSTEM



VALET PARKING



24/7 CCTV CAMERAS



FACILITIES & AMENITIES

PROJECT OVERVIEW



GROUND + 12 TYPICAL FLOOR

Administrative
Third to the Twelfth Floor

Commercial
Ground, First, Second Floor



Pharmacy



FOREVER 21

RESTAURANT

HAMBURGERS

HOT DOGS

MILKSHAKES

HAMBURGERS

HOT DOGS





 HARMONT
NEW OFFICE

INTERIORS

Decors do control moods, it is a proven scientific fact. Harmont's interiors are designed to bring the best vibes with its white painted walls and modern ceiling tiles.



CEO OFFICE

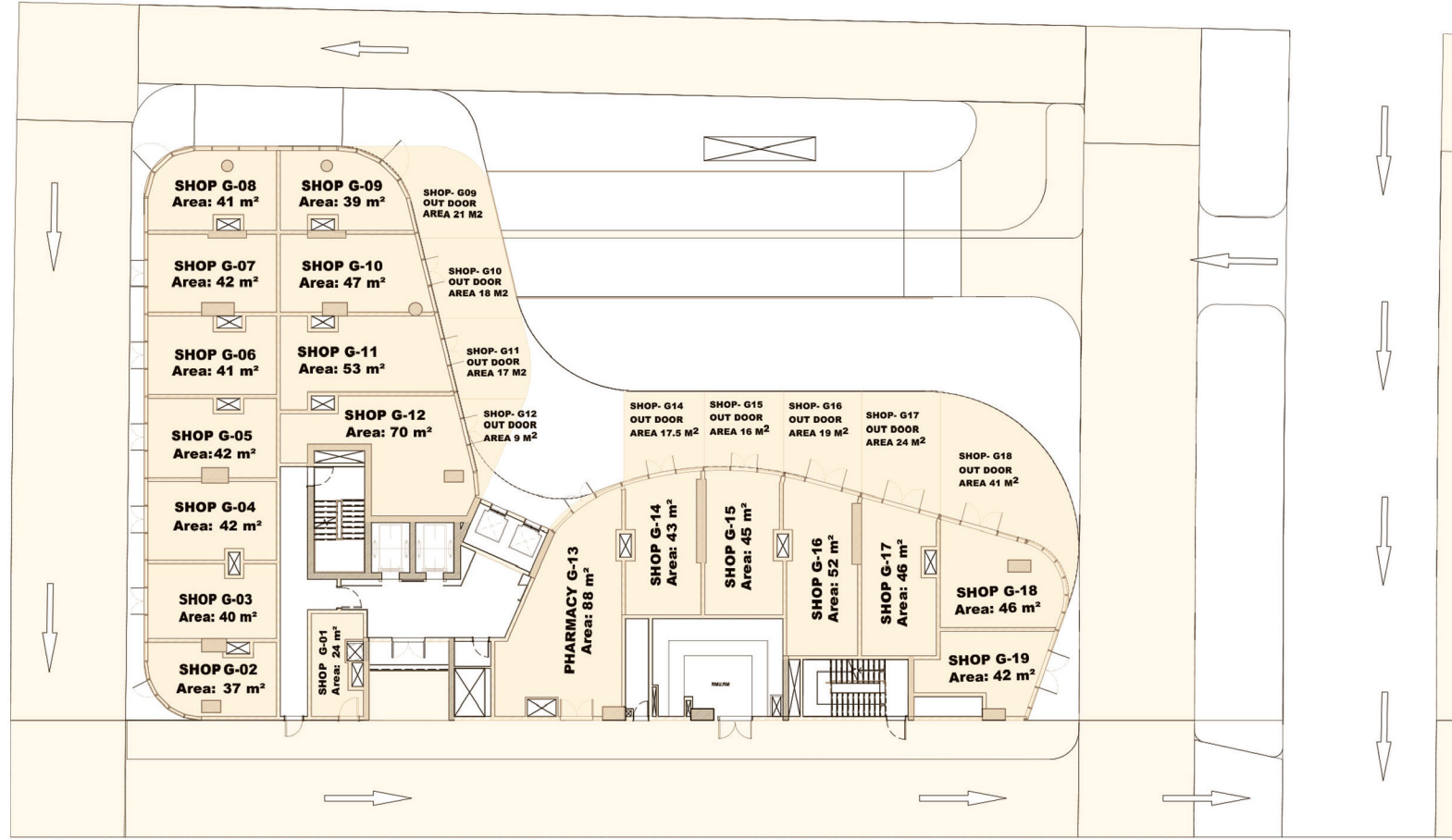
ALWAYS DELIVER MORE
THAN EXPECTED ...

INFO DESK



FLOOR PLANS

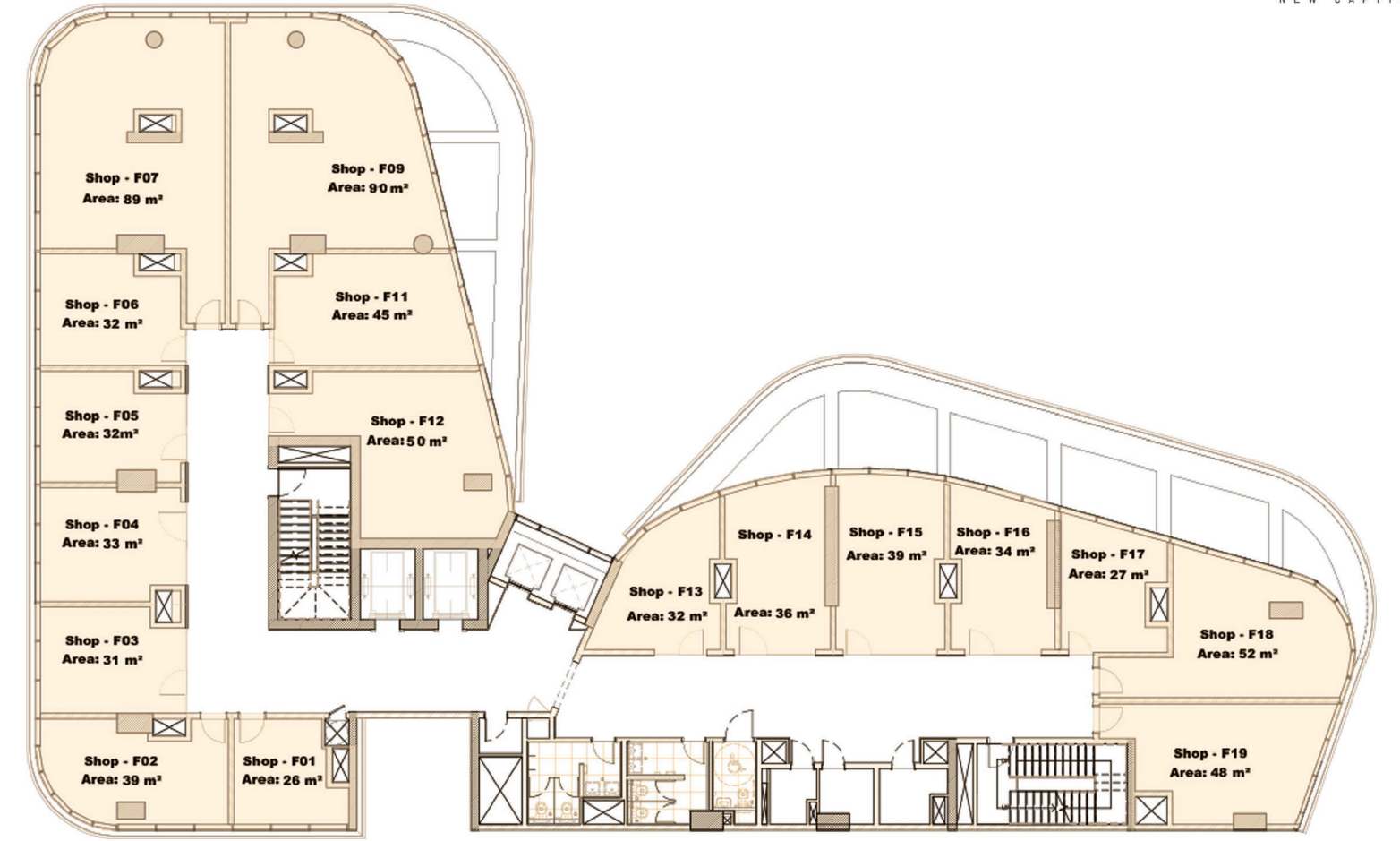
The image is a horizontal composition of three distinct wall colors. On the left, a vibrant orange wall is partially visible. In the center, a dark purple wall features a black rectangular doorway. On the right, a light blue wall is shown. The text 'FLOOR PLANS' is written in a bold, white, sans-serif font across the orange wall.



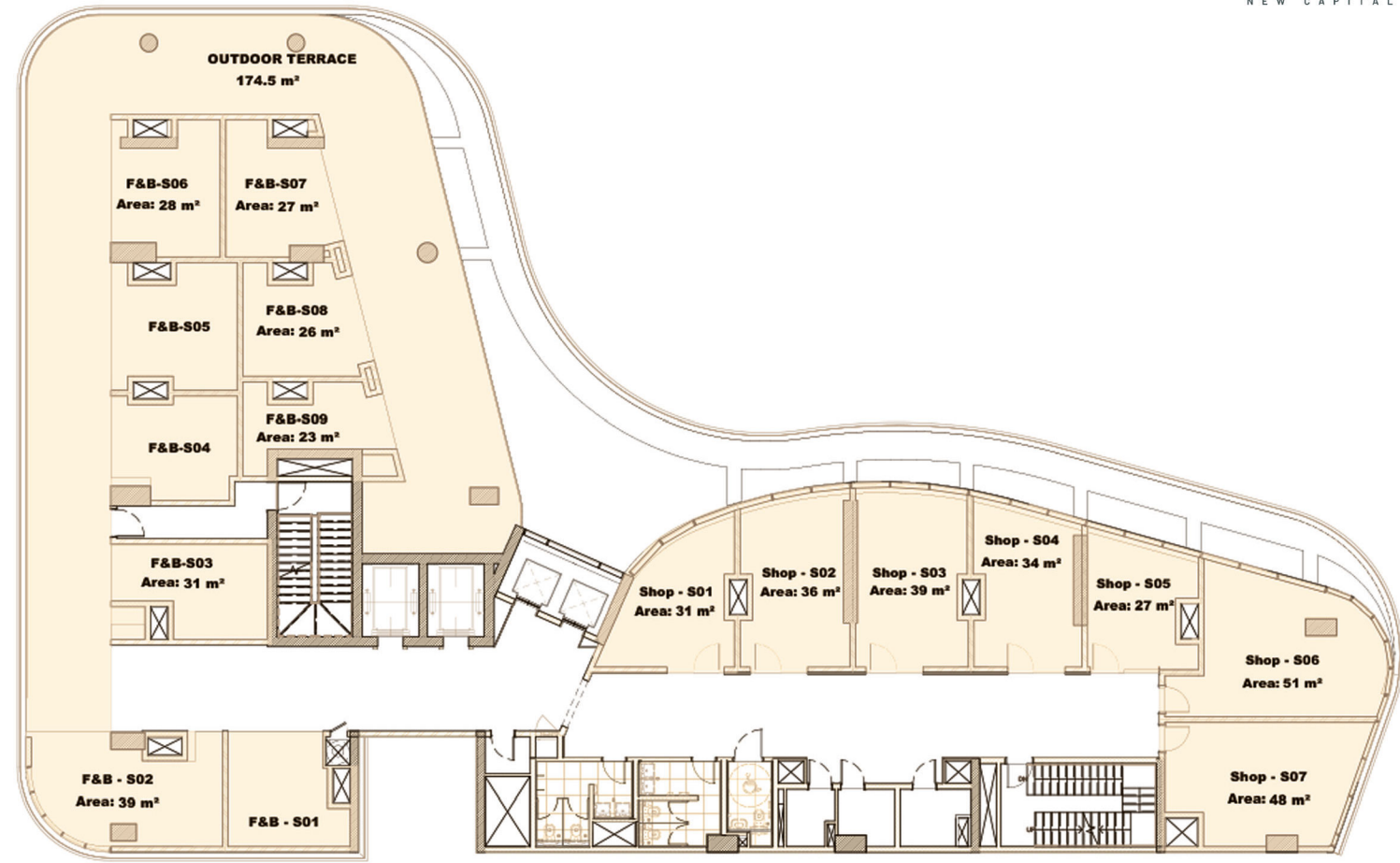
COMMERCIAL

GROUND FLOOR

FIRST FLOOR



COMMERCIAL

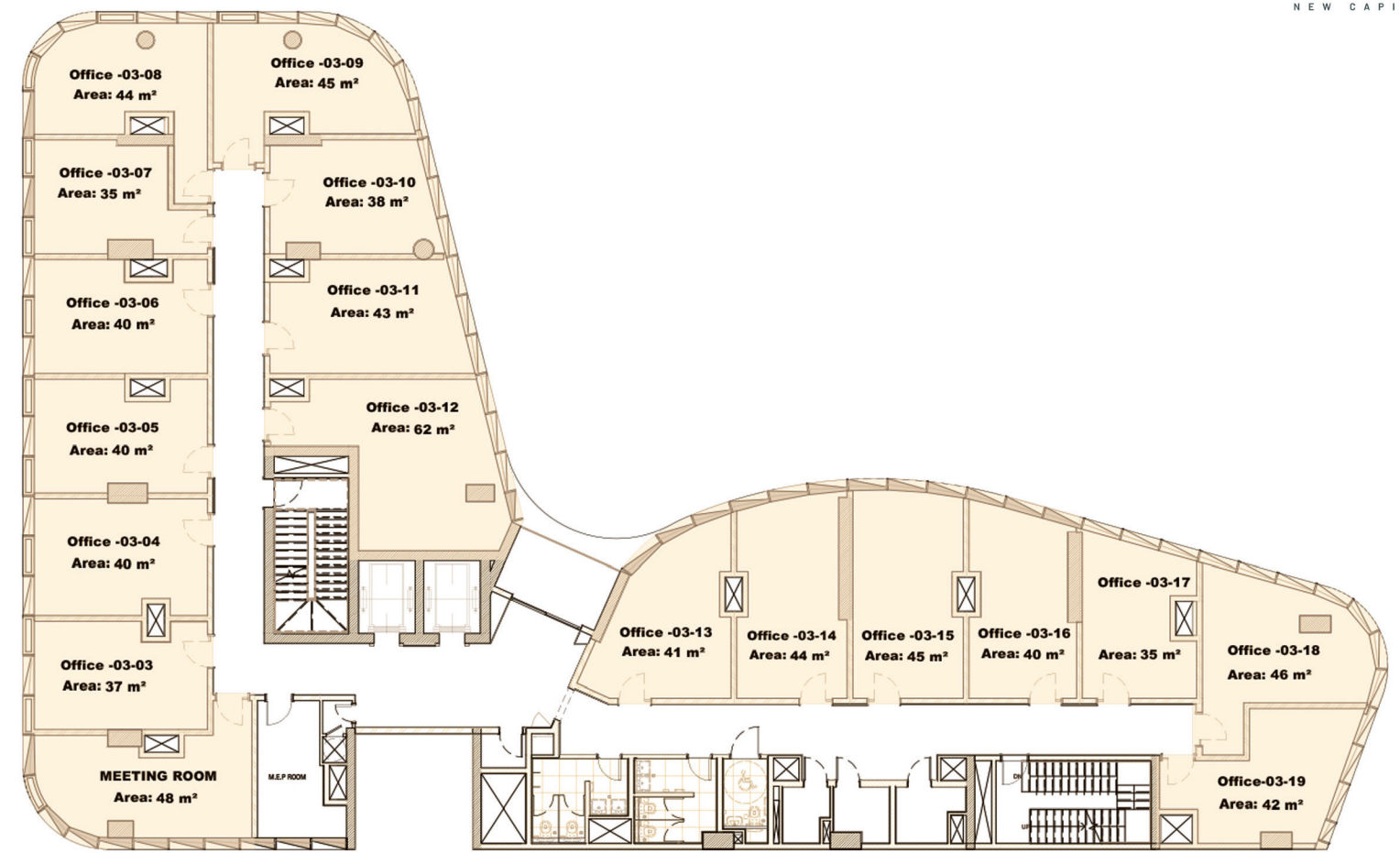


COMMERCIAL

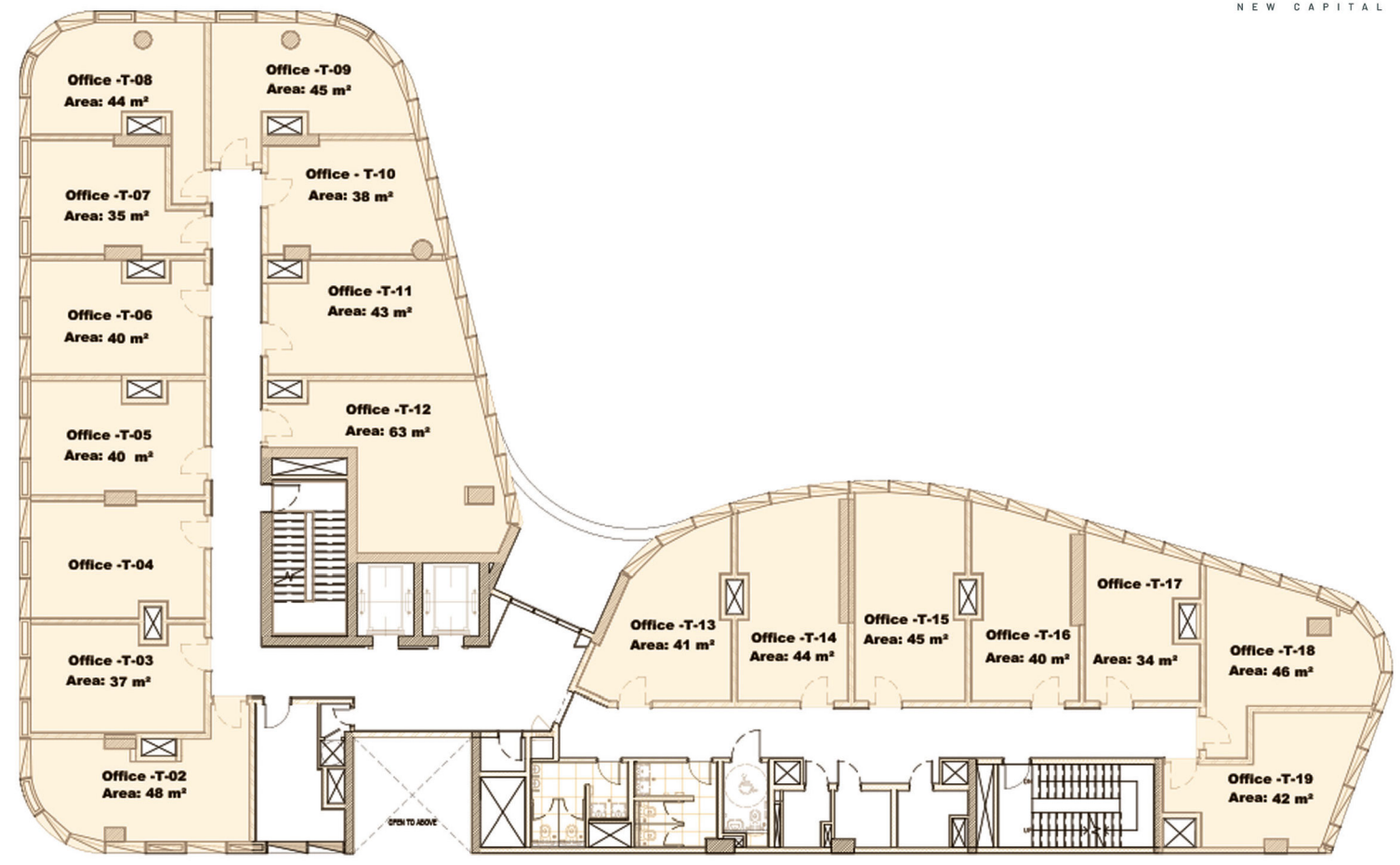
SECOND FLOOR



THIRD FLOOR



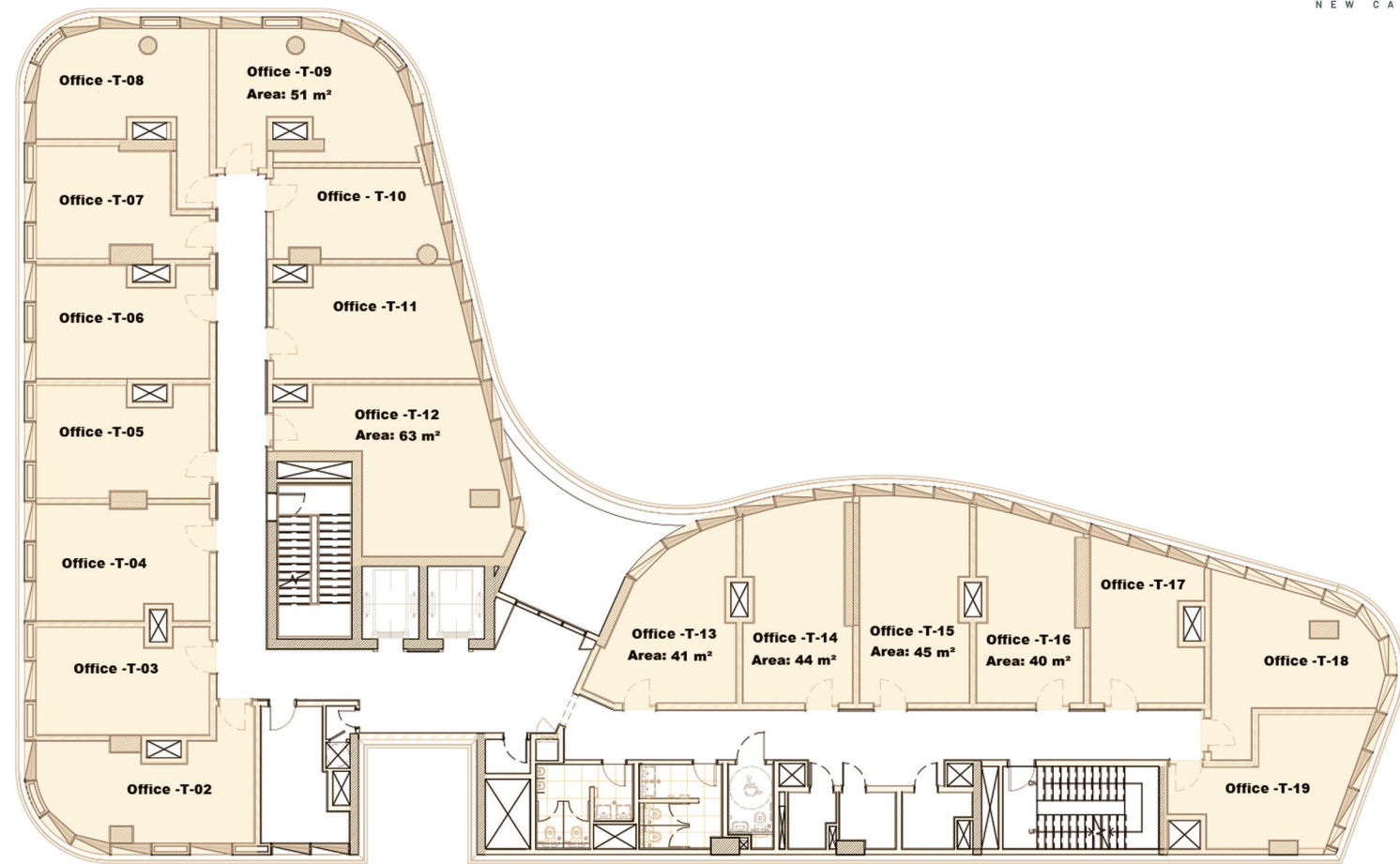
ADMIN



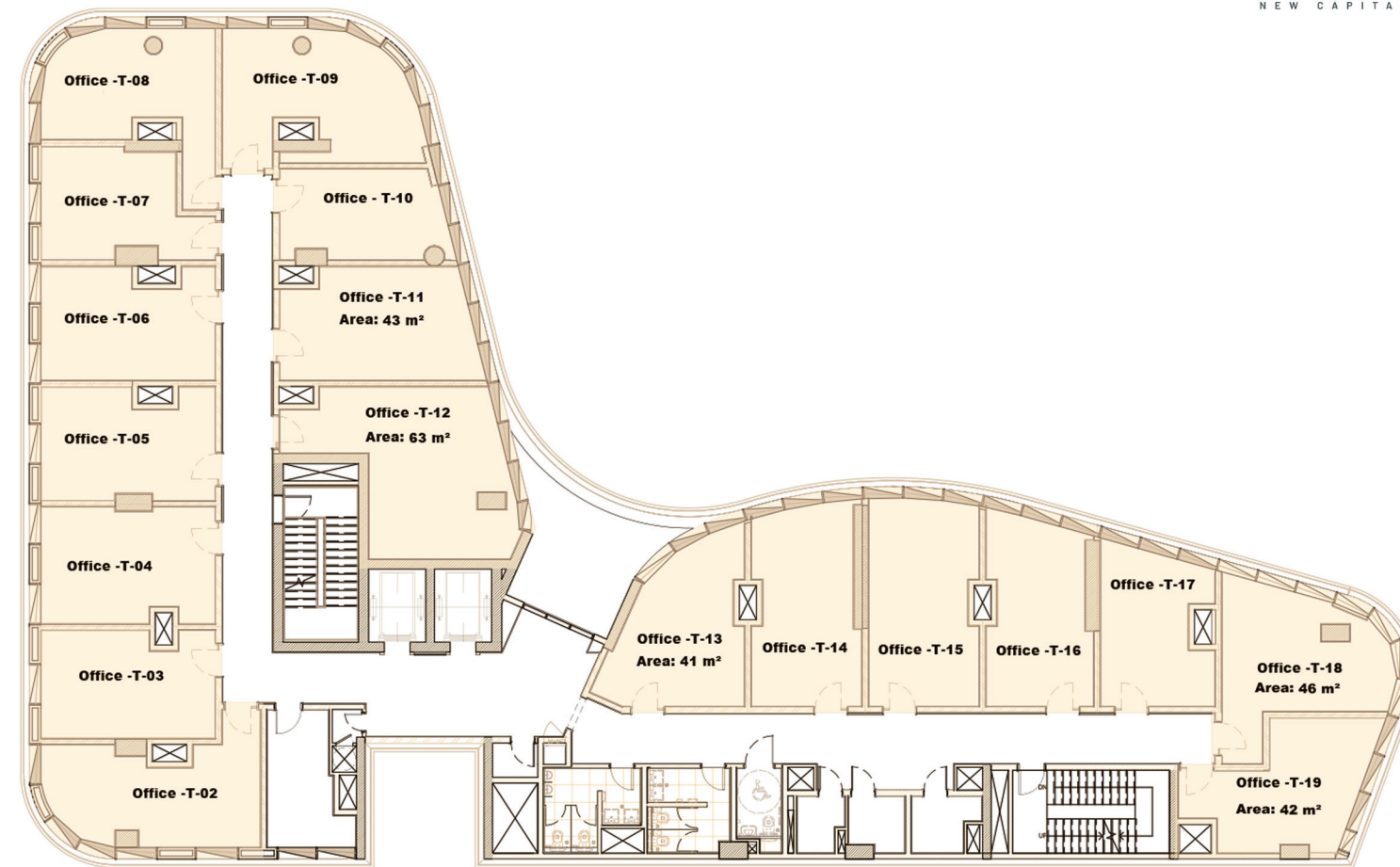
ADMIN

FOURTH FLOOR

FIFTH FLOOR



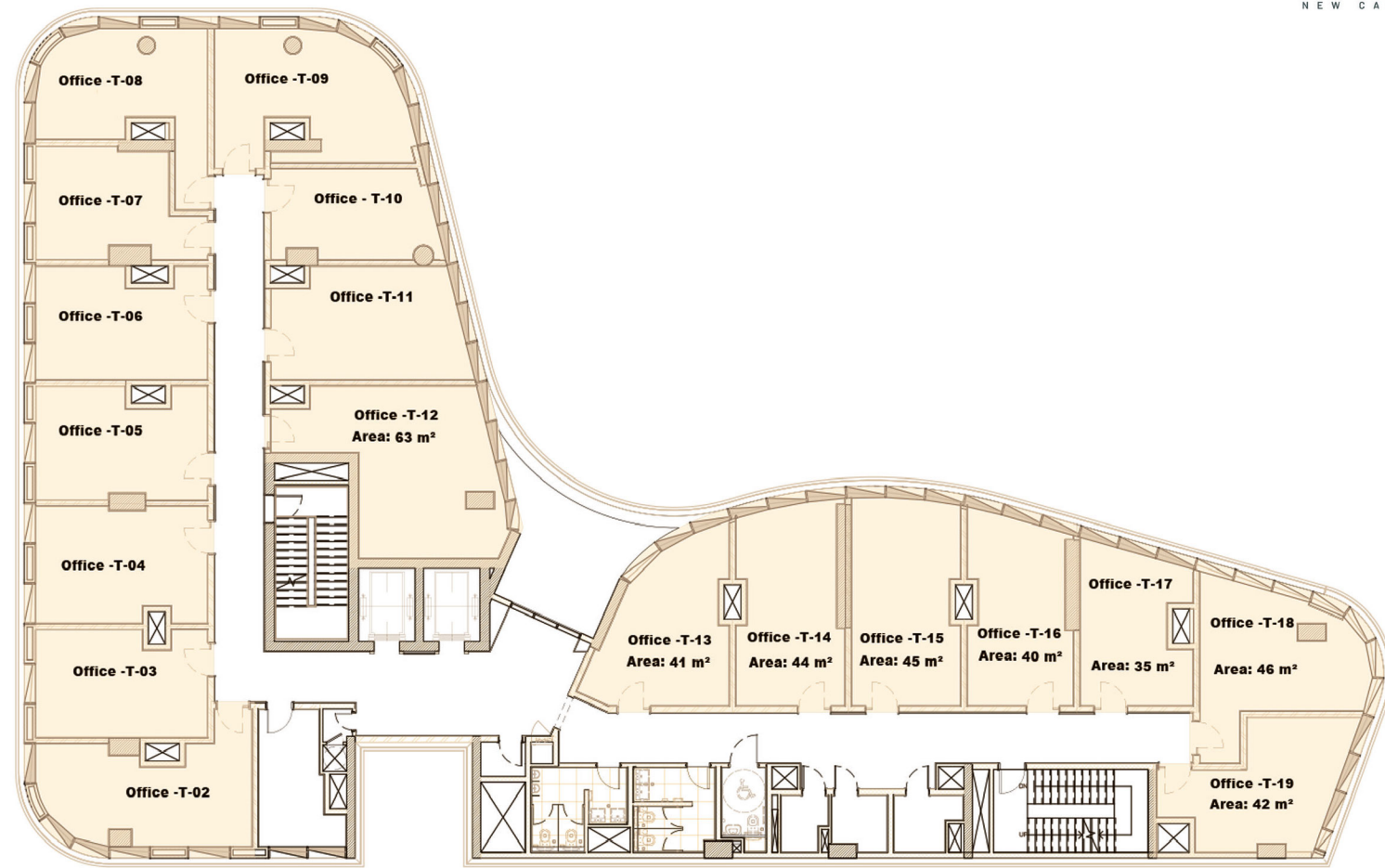
ADMIN



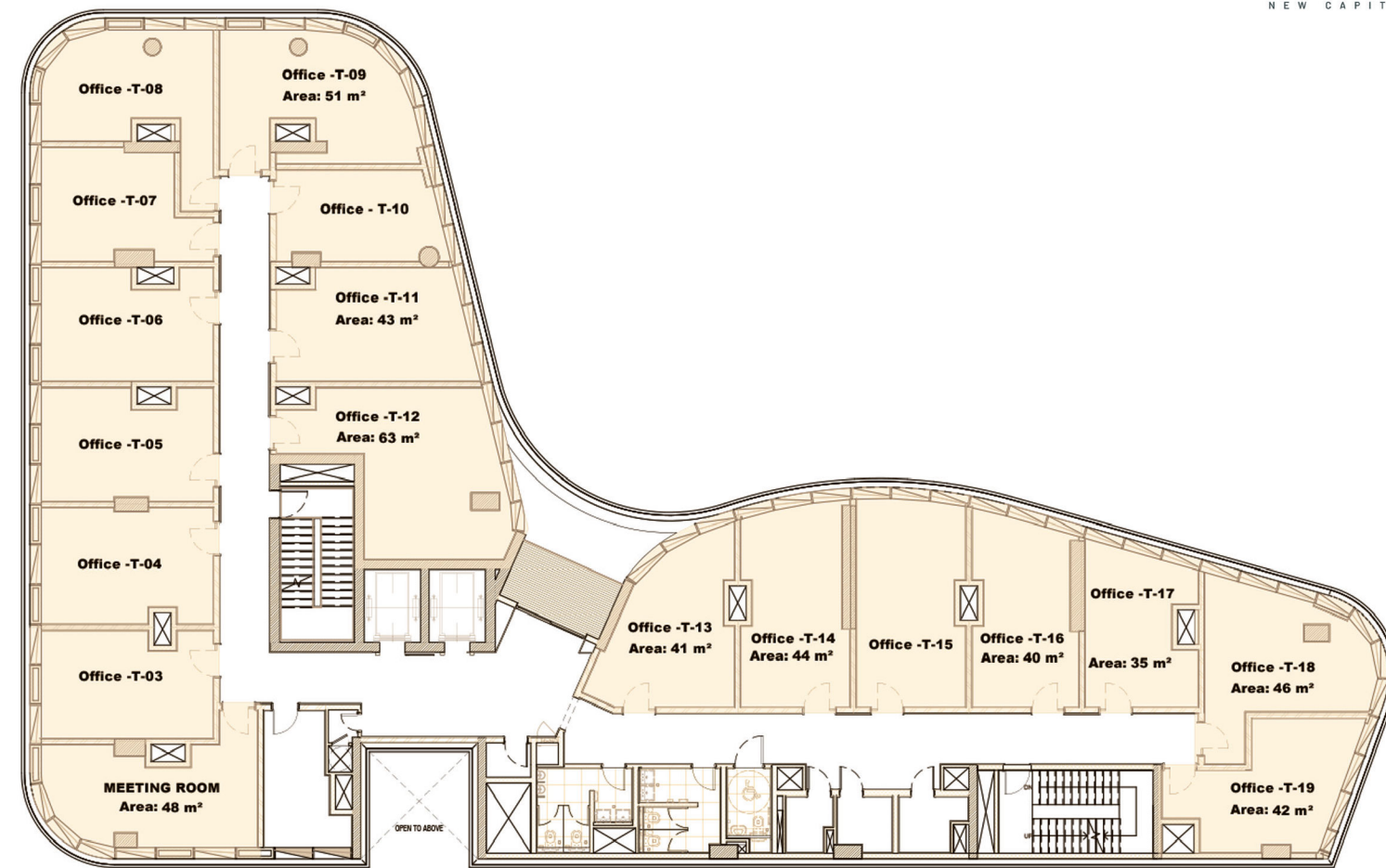
ADMIN

SIXTH FLOOR

SEVENTH FLOOR



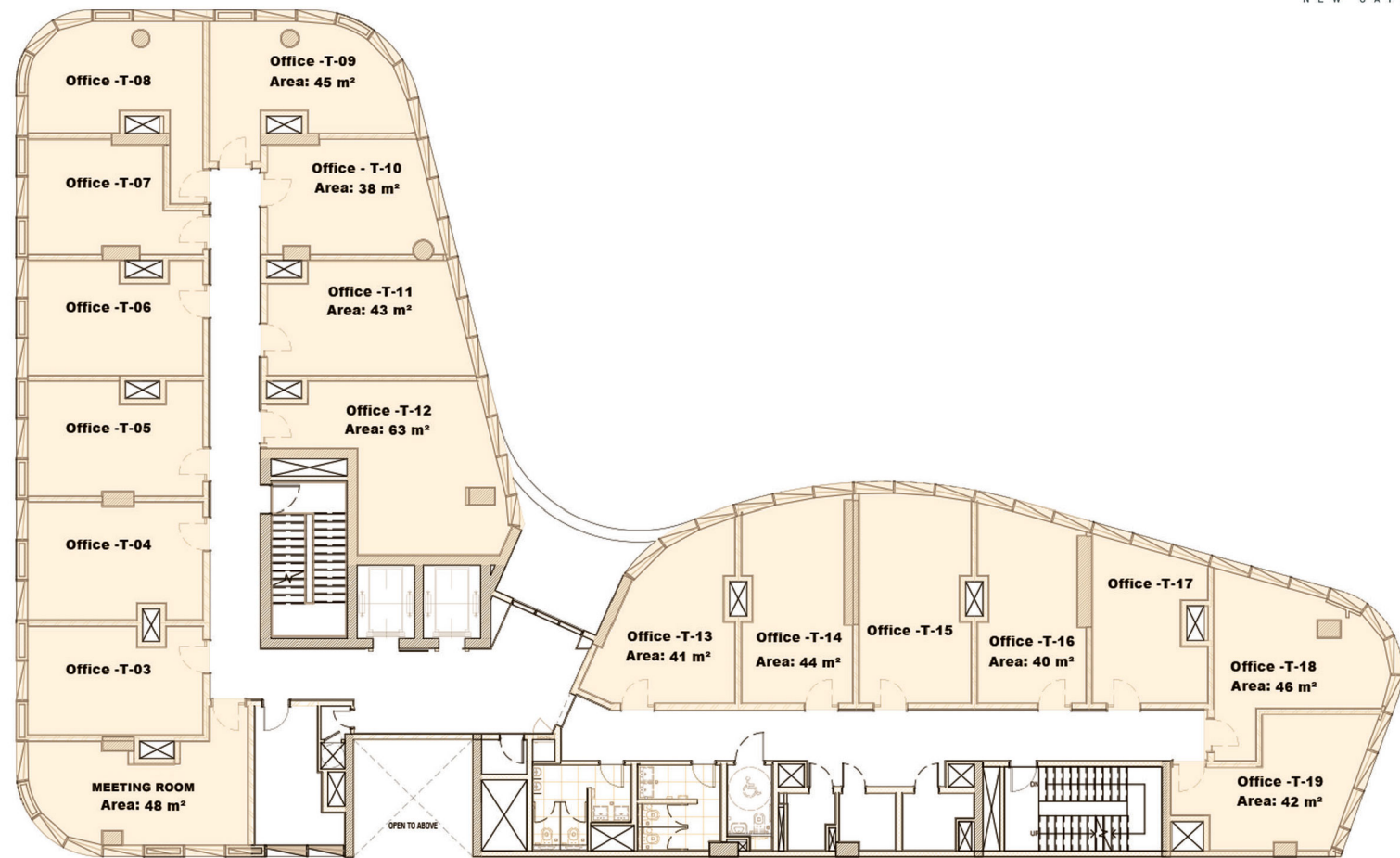
ADMIN



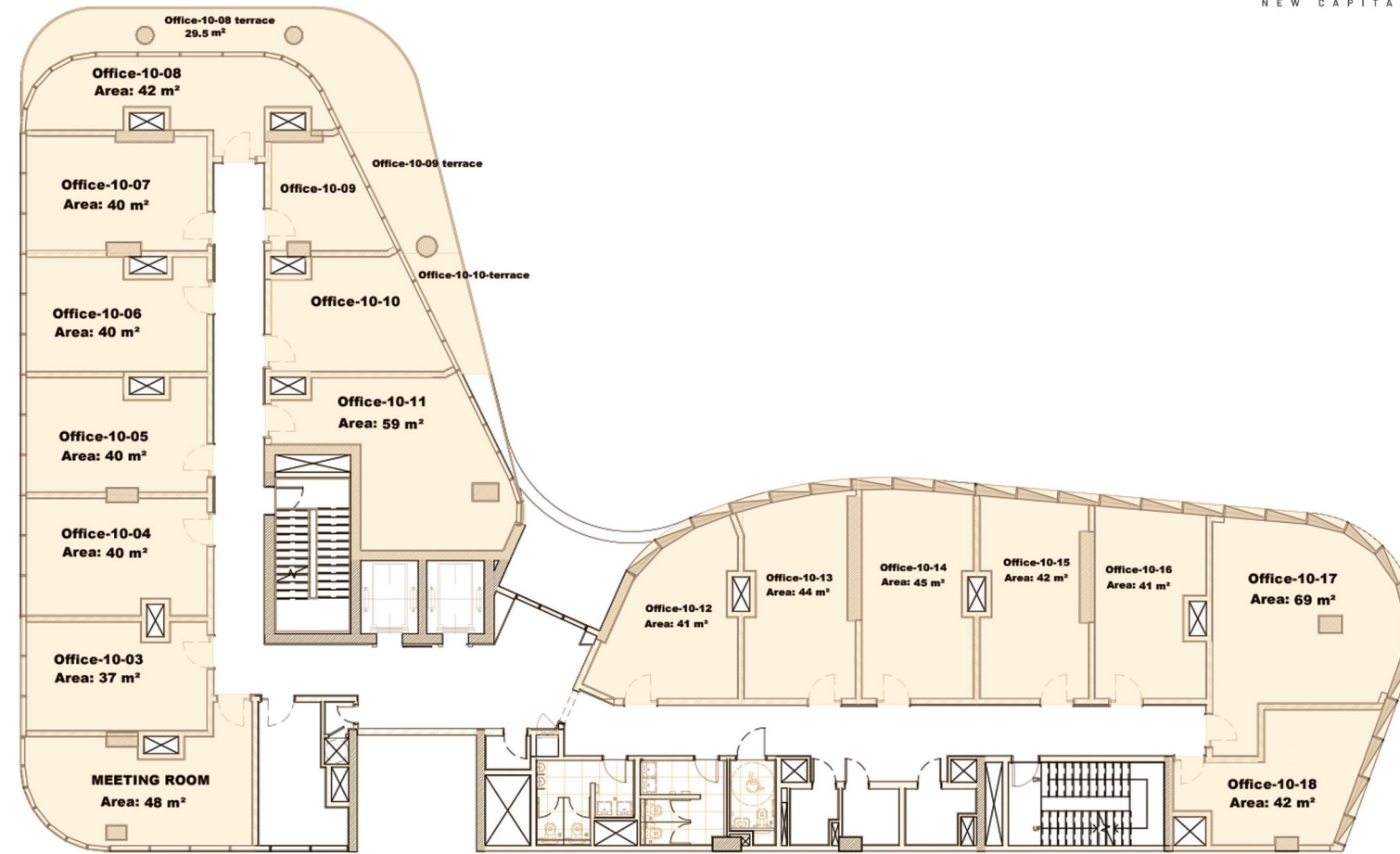
ADMIN

EIGHTH FLOOR

NINTH FLOOR



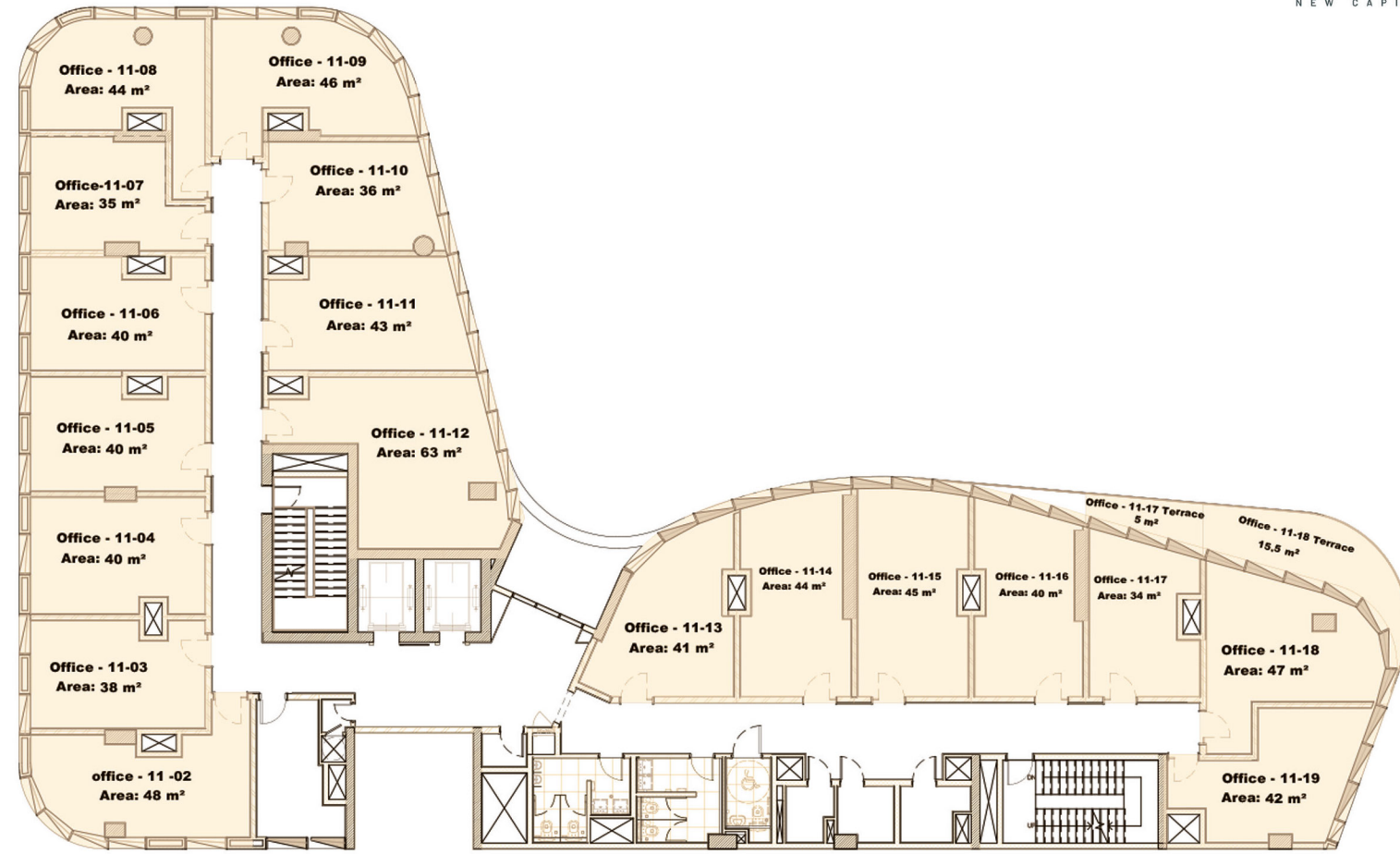
ADMIN



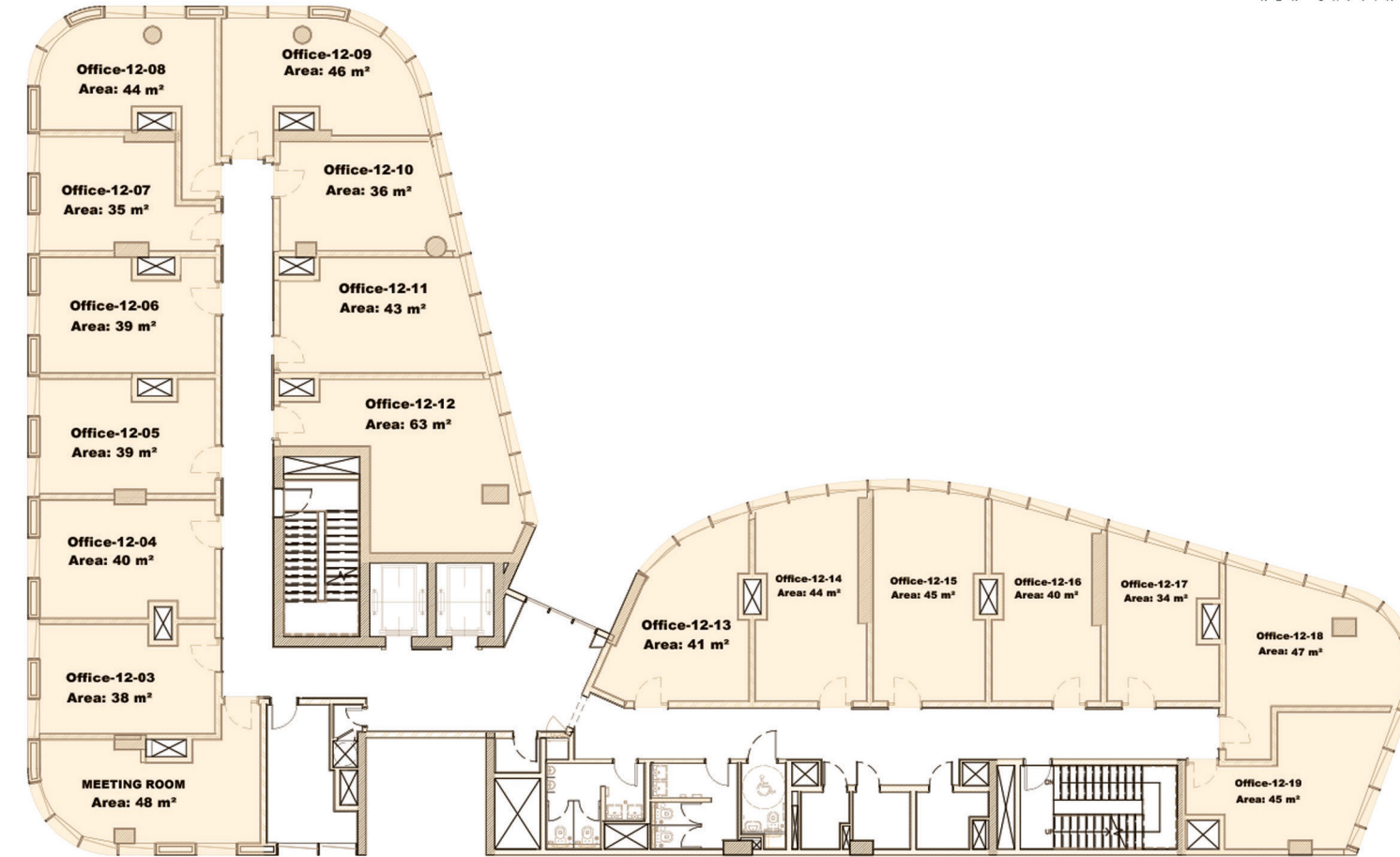
ADMIN

TENTH FLOOR

ELEVENTH FLOOR



ADMIN



ADMIN

TWELFTH FLOOR

A photograph of a modern building at night, viewed through a window. The image is overlaid with a teal color and features bokeh light effects. The text 'PARTENERS IN SUCCESS' is written in white, bold, uppercase letters on the left side.

PARTENERS IN SUCCESS

Telecom Egypt

Telecom Egypt is the first total telecom operator in Egypt providing all telecom services to its customers including fixed and mobile voice and data services.

Telecom Egypt has a long history of serving Egyptian customers for over 160 years maintaining a leadership position in the Egyptian telecom market by offering the most advanced technology, reliable infrastructure solutions, and the widest network of submarine cables.

Mimar

is a leading professional design practice providing consultancy services.

Established in Gulf Region in 1997, Mimar has a long history of partnering with specialty consultants & internationals as a local consultant throughout the MENA region.

moharam bakhoum

Is one of the oldest, largest, and most experienced multidisciplinary engineering consultancy companies currently operating worldwide.

the company offers services in multi-disciplinary tasks in the fields of planning, design, project management, and construction supervision - the entire range of construction-related activities.

Efs

Is a regional leader in delivering integrated facilities management services across the Middle East, Africa, South Asia, and Turkey.

EFS has been accredited for over 20 years in providing quality services to some of the biggest regional names.

Filomix

Filomix was established in 2016 with a clear plan to create the largest independent network of concrete suppliers and combine high-quality concrete supply with exceptional levels of service, giving our customers a market-leading experience at all times. As experts in our respective fields, our close ties with concrete partners means that we can provide a service which delivers premium workmanship, anywhere and at any time.



CONTACT

CALL US AT **15898**

EMAIL US AT **INFO@PRIMEDEV-EG.COM**

HEAD QUARTER

340A OFFICE BUILDING - SECOND FLOOR,
90TH STREET, NEW CAIRO, CAIRO, EGYPT



HARMONT
NEW CAPITAL

Powered by



PRIME
DEVELOPMENTS